



Air-Loc® Fan Assembly Features:

- For use as a line stringer, ventilator, and smoke blower
- Made of lightweight, cast aluminum
- Foam base minimizes vibration

Equipped with:

- Honda or Briggs & Stratton engine
- Top-mounted handles for easy maneuverability

Line Stringer Usage Details:

- Will string a 300' section of sewer line in under a minute without plugging the line
- Line stringer vacuum pulls a lightweight nylon parachute through wet or dry lines

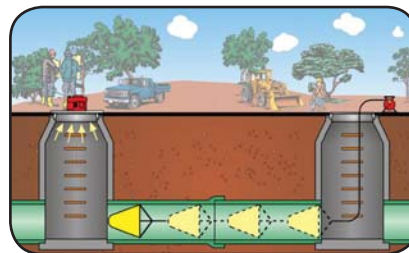
Ventilator Usage Details:

- Supports OSHA guidelines for confined space entry
- Provides up to 2,350 CFM as a blow-in ventilator and up to 3470 CFM as a suction ventilator¹
- Out-performs similar competitive models by 40% at 3" of static pressure²

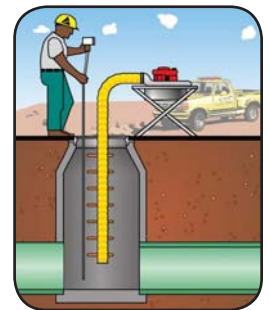
Part #	Description	Product Weight
Stringers / Ventilators / Accessories		
301000	Line stringer: Briggs & Stratton engine	72 lbs (33 kg)
303318	Line stringer: Honda engine	72 lbs (33 kg)
303232	Ventilator: Briggs & Stratton engine*	90 lbs (41 kg)
303338	Ventilator: Honda engine	90 lbs (41 kg)
012100	Air-Loc® fan assembly	63 lbs (29 kg)
014714	Line stringer replacement fan	2.5 lbs (1.1 kg)
300608	1000' Nylon rope and reel	9 lbs (4.1 kg)
066303	4" Parachute	.06 lbs (.03 kg)
015403	6" - 10" Parachute	.19 lbs (.09 kg)
050628	8" - 12" Parachute	.3 lbs (.14 kg)
300594	10" - 18" Parachute	.63 lbs (.28 kg)
006525	18" - 36" Parachute	1.2 lbs (.54 kg)
008250	Ventilator conversion kit	18 lbs (8.16 kg)



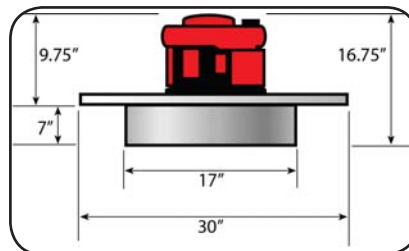
Suction ventilator



Line stringer



Blow-in ventilator



Fan assembly dimensions

¹ - CFM performance based on independent laboratory tests. When tested side-by-side at an independent air flow laboratory, Cherne's line stringer, ventilator, and smoke blower beat the competition at every flow condition.

² - A copy of the independent lab results available upon request.