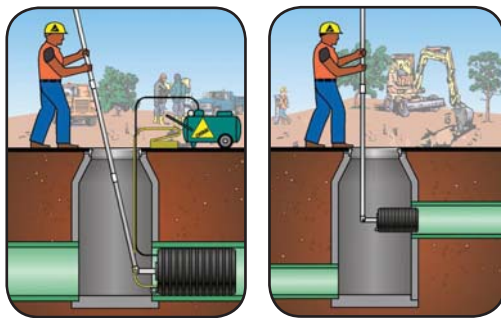


The Remo® Remote Placement plug provides two advantages—it **eliminates** the need to **enter confined spaces** and speeds up the **pipe plugging** process. The system is **safer** and **less expensive** to use than conventional plugging methods because it requires no confined space equipment to simply block sewer flow. A lightweight aluminum pole system* or a standard 1¼" iron pipe** is used to place the Remo® plug in the sewer system.

Remo® Plug Application



Blocking Flow

Blocking Flow - Drop manhole

Remo® Plug Features:

- Multi-size design to seal multiple pipe sizes
- Can be locked at a 90-degree angle to seal openings in drop manholes
- Can be used as a back plug for sewer tests
- Adapters available to convert Muni-Ball® plugs into Remo® plugs

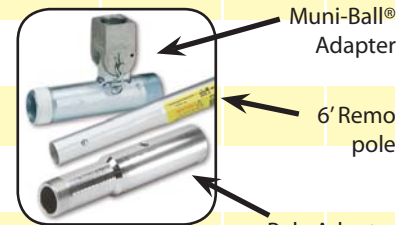
Pole System Features:

- Consists of 6' lightweight aluminum poles with push-button construction
- Designed for plugs up to 30 lbs used in manhole depths of up to 20'
- 1/6th the weight of iron pipe
- Pole system requires Remo® pole adapter

| Part # | Nominal Size | Size Usage Range | | Maximum Allowable Back Pressure | | Product Specifications | | | | Inflation Valve Thread Size | Eye Bolt |
|-------------------------------------|-----------------------------|-------------------|--------------------|---------------------------------|------------------------------|-----------------------------|------------------------|-------------------|-------------------|-----------------------------|----------|
| | | Minimum Diameter | Maximum Diameter | Air Pressure PSI* | Head Pressure (Feet of Head) | Required Inflation Pressure | Product Weight | Deflated | | | |
| | | | | | | | | Length | Diameter | | |
| Remo® Remote Placement Plugs | | | | | | | | | | | |
| 275428 | 6" - 10" (150 - 250 mm) | 5.5" (140 mm) | 10.25" (260 mm) | 13 (0,9 bar) | 30 (9.1 M) | 30 (2,1 bar) | 8 lbs (3.64 kg) | 24" (610 mm) | 5.25" (133 mm) | ¼" (2) | ⅜" (1) |
| 275438 | 8" - 12" (200 - 300 mm) | 7" (178 mm) | 12.25" (311 mm) | 13 (0,9 bar) | 30 (9.1 M) | 30 (2,1 bar) | 10.75 lbs (4.88 kg) | 25.5" (648 mm) | 6.75" (171 mm) | ¼" (2) | ⅜" (1) |
| 275448 | 12" - 18" (300 - 450 mm) | 10.5" (273 mm) | 18.25" (464 mm) | 13 (0,9 bar) | 30 (9.1 M) | 30 (2,1 bar) | 27 lbs (12.25 kg) | 34" (863.5 mm) | 10.5" (267 mm) | ¼" (2) | ⅜" (1) |

Remo® Accessories

| | | | | | | | | | | | |
|--------|--------------------------------|--|--|--|--|--|----------------------|--|--|--|--|
| 019473 | 6' Remo® Pole* | | | | | | 2.3 lbs (1 kg) | | | | |
| 019458 | Remo® Pole Adapter (1¼" M NPT) | | | | | | 1 lb (.5 kg) | | | | |
| 019558 | 1½" Remo® Muni-Ball® Adapter | | | | | | 3.1 lbs (1.4 kg) | | | | |
| 019568 | 2" Remo® Muni-Ball® Adapter | | | | | | 3.8 lbs (1.75 kg) | | | | |
| 019548 | 2" - 1½" Remo® Reducer Bushing | | | | | | .41 lb (.17 kg) | | | | |
| 059688 | 4" - 2" Remo® Reducer Bushing | | | | | | 2 lbs (.91 kg) | | | | |



* Requires pole adapter

** When added strength is needed, iron pipe is recommended

* Always block plugs when conducting air tests!