

# Big-Mouth® Flow-Through Plugs



Pneumatic Plugs  
www.cherneind.com  
1.800.843.7584

Big-Mouth® plugs serve multiple applications.

Great for **gravity bypassing** or **bypass pumping**.

Big-Mouth® plugs can also be used to block sewer flow or to conduct low-pressure sewer air tests.



### The Original Big-Mouth® Plug:

- Large male NPT threaded bypass
- Equipped with removable 3/8" eye bolt for lifting and lowering with a poly-lift line
- Removable tire valve allows for easy replacement
- Lightweight aluminum bypass



### Single-Size Big-Mouth® Plug:

- Single-sized allows for maximum bypass diameter
- Lightweight aluminum bypass
- 6" and 8" sizes have threaded bypass
- 10" and larger feature straight pipe (great for gravity bypassing—simply clamp hose to bypass tube)
- Removable tire valve allows for easy replacement



### Multi-Size Big-Mouth® Plug:

- Multi-size offers great expansion range
- Lightweight aluminum bypass
- Removable tire valve allows for easy replacement

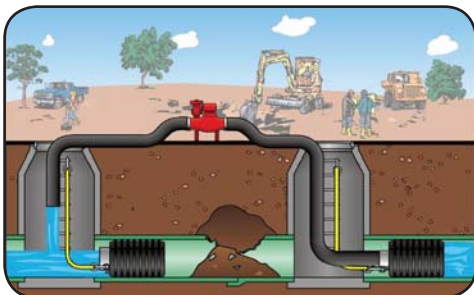


### Multi-Size Big-Mouth® Plug with Interchangeable Flanges:

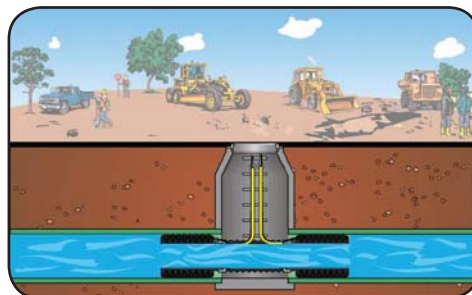
- Multi-size offers great expansion range
- Lightweight aluminum bypass
- 14" and larger feature interchangeable bypass flange, allowing the same plug to be used for different applications
- Removable tire valve allows for easy replacement

## Big-Mouth® Flow-Through Plug Application

Bypass Pumping



Gravity Bypassing



Big Mouth® plugs are not suitable for leak location testing.

Part #	Nominal Size	Size Usage Range		Maximum Allowable Back Pressure		Product Specifications				Bypass Diam. (M NPT)	Inflation Valve Thread Size	Eye Bolt
		Minimum Diameter	Maximum Diameter	Air Pressure PSI*	Head Pressure (Feet of Head)	Required Inflation Pressure	Product Weight	Deflated				
								Length	Diameter			
<b>Original Big-Mouth® Plugs</b>												
269008	8" - 10" (200 - 250 mm)	7.25" (185 mm)	10.25" (260 mm)	11 (0,76 bar)	25 (7.6 M)	35 (2,4 bar)	8.8 lbs (4.02 kg)	14.88" (378 mm)	6.94" (176 mm)	4"	¼"	⅜" (1)
269018	10" - 12" (250 - 300 mm)	9.25" (235 mm)	12.25" (311 mm)	11 (0,76 bar)	25 (7.6 M)	30 (2,1 bar)	15.7 lbs (7.12 kg)	17.25" (438 mm)	8.81" (224 mm)	6"	¼"	⅜" (1)
269028	12" - 15" (300 - 380 mm)	10.62" (270 mm)	15.25" (387 mm)	11 (0,76 bar)	25 (7.6 M)	30 (2,1 bar)	20 lbs (9.07 kg)	17.88" (454 mm)	10.25" (260 mm)	6"	¼"	⅜" (1)
<b>Single-Size Big-Mouth® Plugs</b>												
369068	6" (150 mm)	5.69" (145 mm)	6.34" (161 mm)	11 (0,76 bar)	25 (7.6 M)	30 (2,1 bar)	7 lbs (3.2 kg)	13.25" (337 mm)	5.38" (137 mm)	4" NPT threaded	⅛" removable	⅜" (1)
369088	8" (200 mm)	7.75" (195 mm)	8.45" (215 mm)	11 (0,76 bar)	25 (7.6 M)	30 (2,1 bar)	10 lbs (4.5 kg)	16" (406 mm)	7.5" (191 mm)	6" NPT threaded	¼" removable	⅜" (1)
369108	10" (250 mm)	9.75" (250 mm)	10.46" (266 mm)	11 (0,76 bar)	25 (7.6 M)	30 (2,1 bar)	17 lbs (7.7 kg)	20" (508 mm)	9.13" (232 mm)	8" OD non-thread	¼" removable	⅜" (1)
369128	12" (300 mm)	11.75" (300 mm)	12.52" (318 mm)	11 (0,76 bar)	25 (7.6 M)	30 (2,1 bar)	21 lbs (9.5 kg)	20" (508 mm)	11.13" (283 mm)	10" OD non-thread	¼" removable	⅜" (1)
369158	15" (375 mm)	13.9" (353 mm)	15.56" (395 mm)	11 (0,76 bar)	25 (7.6 M)	30 (2,1 bar)	26 lbs (11.8 kg)	20" (508 mm)	13.13" (333 mm)	12" OD non-thread	¼" removable	⅜" (1)
369188	18" (450 mm)	16.88" (429 mm)	18.74" (476 mm)	11 (0,76 bar)	25 (7.6 M)	30 (2,1 bar)	31 lbs (14 kg)	20" (508 mm)	16.13" (410 mm)	15" OD non-thread	¼" removable	⅜" (1)
369218	21" (525 mm)	20.01" (508 mm)	21.81" (554 mm)	11 (0,76 bar)	25 (7.6 M)	30 (2,1 bar)	37 lbs (16.8 kg)	20" (508 mm)	19.13" (486 mm)	18" OD non-thread	¼" removable	⅜" (1)
369248	24" (600 mm)	22.63" (575 mm)	24.98" (634 mm)	11 (0,76 bar)	25 (7.6 M)	30 (2,1 bar)	42 lbs (19 kg)	20" (508 mm)	21.13" (537 mm)	20" OD non-thread	¼" removable	⅜" (1)
<b>Multi-Size Big-Mouth® Plugs</b>												
374068	6" - 10" (150 - 250 mm)	5.75" (146 mm)	10.25" (260 mm)	10 (0,69 bar)	23 (10 M)	40 (2,8 bar)	15 lbs (6.8 kg)	24.5" (622 mm)	5.65" (146 mm)	4" NPT	¼" removable	⅜" (1)
374088	8" - 12" (200 - 300 mm)	7" (178 mm)	12.25" (311 mm)	15 (1,0 bar)	34 (10.5 M)	35 (2,4 bar)	22 lbs (10 kg)	26" (660 mm)	6.75" (165 mm)	4" NPT	¼" removable	⅜" (1)
376088										6" NPT	¼" removable	
376128	12" - 18" (300 - 450 mm)	11.25" (286 mm)	18.25" (464 mm)	10 (0,69 bar)	23 (10 M)	25 (1,7 bar)	45 lbs (21 kg)	28" (711 mm)	11" (279 mm)	6" NPT	¼" removable	⅜" (1)
378128*										8" NPT	¼" removable	
376148*	14" - 21" (375 - 525 mm)	13.6" (345 mm)	21.25" (540 mm)	10 (0,69 bar)	23 (10 M)	25 (1,7 bar)	60 lbs (27 kg)	30" (762 mm)	13.25" (337 mm)	6" NPT	⅛" removable	⅜" (2)
378148*										8" NPT	⅛" removable	
380148**										10" NPT	⅛" removable	
376188*	18" - 24" (450 - 600 mm)	16.5" (419 mm)	24.25" (616 mm)	10 (0,69 bar)	23 (10 M)	22 (1,5 bar)	90 lbs (41 kg)	34" (864 mm)	6" (406 mm)	6" NPT	⅛" removable	½" (2)
378188*										8" NPT	⅛" removable	
380188*										10" NPT	⅛" removable	
376248*	24" - 36" (600 - 900 mm)	21.75" (552 mm)	36.25" (921 mm)	10 (0,69 bar)	23 (10 M)	20 (1,4 bar)	146 lbs (67 kg)	41.5" (1054 mm)	21.5" (546 mm)	6" NPT	¼" removable	½" (2)
378248*										8" NPT	¼" removable	
380248*										10" NPT	¼" removable	

\* Sizes 14" and up feature interchangeable bypass flanges.

\*\* 10" bypass is not interchangeable on the 14"-21" plug.